

(80 1/2)

April 12-1891

Beg. at centre Sec 15

N 3° 09' W 564.96 ft. to

N.W. Cor. Wheeler, 620. to

of slough top of bank 650

713. across slough 732. top of

940 bank 982. water 1040. ac

1060 north bank 1256. 64 ft.

cor. in slough 10 ft. N. of fence

of ditch 3x1' 2 1/2 ft. N. of

ditch sloughville branch

589° 48'

24.24

21.93 a

2373 ch

Quar. cor. Quar. SEC. 15

E 22.83 ch.

1506.78

45.66 a

W 22.83 ch.

168.5 bank

92.5 94.0

92.5 94.0

92.5 94.0

92.5 94.0

92.5 94.0

92.5 94.0

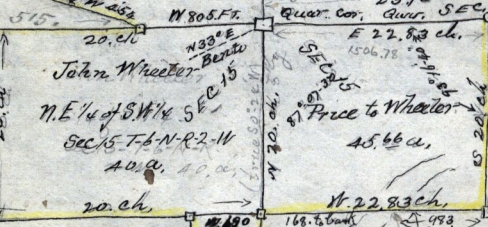
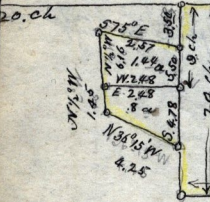
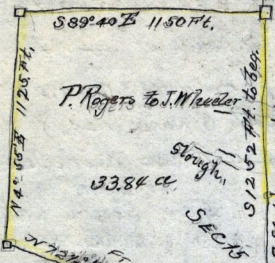
92.5 94.0

92.5 94.0

92.5 94.0

92.5 94.0

92.5 94.0



Make this point
ft South of Quar.
for 1/16th Sec 15
along W. 98th
River to a

Sketch of Lands owned by the
Estate of John Wheeler deceased,
in Stattersville, Weber Co.,
Sec 15 T-6-N-R-2-W.

See description on pages 78-80.

References - see Book C - page 70, - Contains 145.97 ac

April 7-1891